

AUTHORIZED  
DEALER



Z169.720

M10



CERTIFIED



## INDUSTRIAL LOGISTICS

**Zallys M10** is a powerful electric tug, designed for towing wheeled loads up to 10.000 kg (22.046 lb) on flat ground.

Thanks to its steering tiller, M10 is extremely handy during use and the wide range of hooks and ballasts available allows it to easily handle trains consisting of several trolleys, trailers and machinery.

The compact size of this electric tug allows modern stage production process methods to be used, while preventing injuries and creating a safer working environment.

## PERFORMANCES



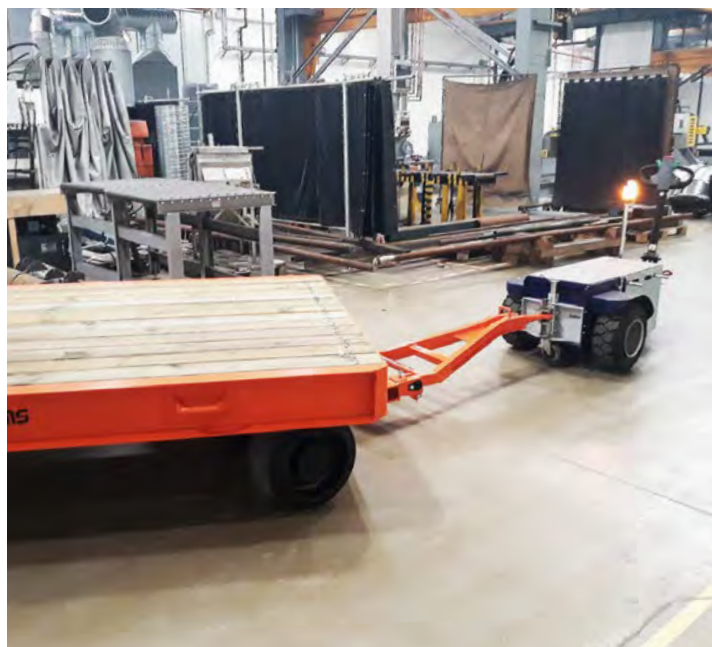
5 KM/H  
(3.6 MPH)



10.000 KG  
(22,046 LB)



15%





Pushing block  
A161.700



17 kg back ballasts  
(37.5 lbs.) (max 10 pcs.)

Z169.851



Fitting kit for ballast

Z169.852



Hour meter  
E204.700

Pole mounted  
flashing beacor  
Z099.718



On/off keypad  
E506.750



Adjustable connection  
for hitches

ZG40.003.800



Drop pin Ø40 mm  
(1.58") A199.706



17,5 kg (38.6 lbs.)  
side ballasts  
(max 20 pcs.)

Z169.850



Rear wheel guard  
Z323.710



www.zallys.com



Telephone: 843.388.2556  
www.absolutee-zup.com



Scan this QR code  
for more information