



*presents the*  
**TRACCESS TR-49/24™**  
*and TRE-49/24™*



### EXTEND YOUR REACH

When you need to reach where other units can't, turn to the Absolute E-Z Up TRACCESS TR-49/24™ or electric TRE-49/24™ track-mounted booms. With over 55 ft of working height, 24 ft working outreach and 6 ft articulating jib with 105° vertical rotation, the TRACCESS TR-49/24 gives you the access you need to complete a variety of worksite tasks, whether indoors or out.

Its compact footprint and True Zero™ tail swing makes the TRACCESS TR-49/24 the ideal lift to maneuver in tight workspaces and will pass through standard doorways with ease.

### GO MORE PLACES

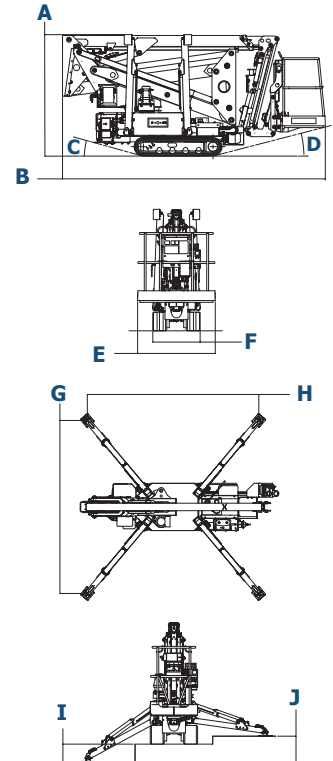
With its non-marking tracks, light 4,620-lb unit weight, compact design and 31% gradeability, the superior maneuverability of the TRACCESS TR-49/24 allows you to go more places on the jobsite. Whether you need to replace ceiling tiles, repair a second-story gutter or cross uneven terrain to trim tree lines, the TRACCESS TR-49/24 is a highly-versatile machine that will save you time and money.

And when you're ready to head to the next job site, use the remote coil cable control system to load the TRACCESS TR-49/24 onto a trailer or hook it up to a hitch for quick and easy transport.



## TECHNICAL DATA

Model and Measurements	TR-49/24™		TRE-49/24™	
	US	Metric	US	Metric
A Height Stowed	78.83 in	2,002 mm	78.83 in	2,002 mm
B Length Stowed	170.53 in	4,331 mm	170.53 in	4,331 mm
C Entry Angle	15°	15°	15°	15°
D Exit Angle	15°	15°	15°	15°
E Width Stowed	50.39 in	1,280 mm	50.39 in	1,280 mm
F Tracks Width	30.71 in	780 mm	30.71 in	780 mm
G Width with Stabilizers Down	112.20 in	2,850 mm	112.20 in	2,850 mm
H Length with Stabilizers Down	111.02 in	2,820 mm	111.02 in	2,820 mm
I Max Stabilizer Step Down Height	11.42 in	290 mm	11.42 in	290 mm
J Max Stabilizer Step Up Height	16.54 in	420 mm	16.54 in	420 mm
Platform Height	49.2 ft	15 m	49.2 ft	15 m
Working Height	55 ft 9 in	17 m	55 ft 9 in	17 m
Horizontal Outreach	24.7 ft	7.5 m	24.7 ft	7.5 m
Turret Rotation	330°	330°	330°	330°
Platform Capacity (Unrestricted)	440 lbs	200 kg	440 lbs	200 kg
Jib Length - Range of Articulation	6 ft 105°	6 ft 105°	6 ft 105°	6 ft 105°
Basket Dimensions (1 or 2 person)	51x27x43 in	1,300x700x1,100 mm	51x27x43 in	1,300x700x1,100 mm
Overall Width	31.5 in	800 mm	31.5 in	800 mm
Overall Height	6 ft 7 in	2,000 mm	6 ft 7 in	2,000 mm
Weight	4,620 lbs	2,050 kg	4,620 lbs	2,050 kg
Drive Speed (Gas and Electric)	.93 mph	1.5 km/hr	.50 mph	0.8 km/hr
Gradeability	31%	31%	31%	31%
Power (Single Cylinder Gas Engine) - Auxiliary Engine	15 HP 230 V 1.5 kW	15 HP 230 V 1.5 kW		
Power (Electric Engine) - Run Rate - Batteries			48 V 4-5 Hours Lithium 100 Ah (charging cycles permitted 2000)	48 V 4-5 Hours Lithium 100 Ah (charging cycles permitted 2000)

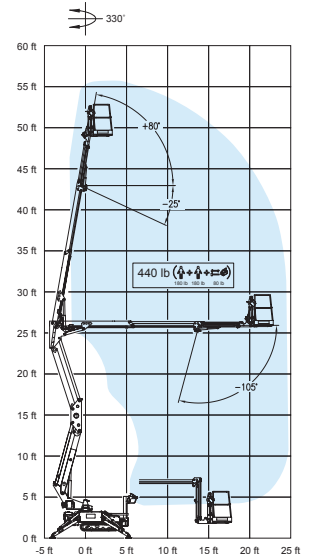


## PRODUCT FEATURES:

- Two-element steel boom (main boom + extension) and jib
- 330° tower rotation on center bearing turntable
- 440-lb work capacity throughout entire working area
- Individual, proportional, electro-hydraulic controls in basket
- Engine start and stop controls from basket
- Electro-hydraulic steering from the ground with remote control
- Covered control panel – prevents damage
- Basket leveling through hydraulic, parallel linkage
- Easily detachable basket
- Strong, durable composite material for basket floor; aluminum guardrail
- 230V AC CE-compliant outlet in basket
- Four hydraulic outriggers with ground-pressure sensors for leveling
- Enclosed electrical and hydraulic systems - protected from weather and debris
- Hour meter
- Self-loading and towable
- Available in blue or white paint

## SAFETY FEATURES

- Platform overload sensor device
- Basket load-sensing device
- Remote coil cable control system – remotely operate boom from safe distance under power
- Two lanyard attachment points on platform
- Emergency push button
- Emergency manual pump
- Outriggers/boom interlocking facility
- Manual emergency lowering valves
- Cylinders with safety non-return valves
- Motion alarm/intermittent buzzer for travel and turntable rotation



distributed by: