



presents the
TRACCESS TR-67/32MH™

**TACKLE WHAT OTHER
MACHINES CAN'T**

Need to move materials over rugged terrain? Lift an air conditioner up and over a roofline? Sometimes wheeled machines and forklifts can't perform the task at hand. When you need an 'all access' machine to do the heavy lifting, turn to the TRACCESS TR-67/32MH™ track-mounted winch.

With its non-wheeled tracks and automatic, 4-area stabilization system, the TRACCESS TR-67/32MH can easily maneuver over rough terrain and provides a safe and stable work platform on uneven ground.

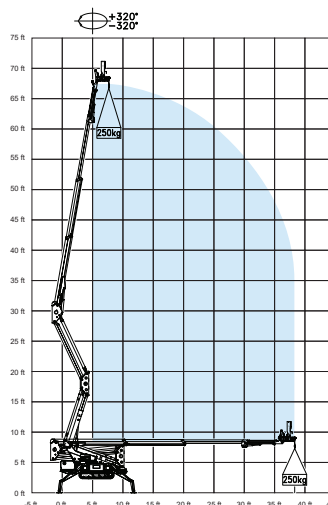
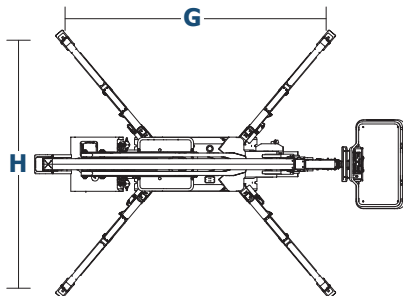
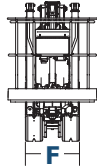
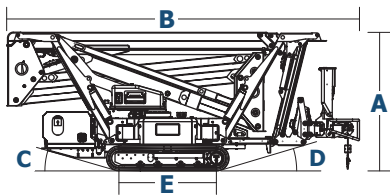
The TRACCESS TR-67/32MH features 32-ft of working outreach and can lift 550 lbs up and over obstacles to safely place materials where you need them.

When you need a machine to move materials where other machines can't, count on the TRACCESS TR-67/32MH to get the job done.



TECHNICAL DATA

Model and Measurements		TR-67/32MH™	
		US	Metric
A	Height Stowed	78.66 in	1,998 mm
B	Length Stowed	200.2 in	5,085 mm
C	Entry Angle	18°	18°
D	Exit Angle	17°	17°
E	Tracks Length	55.31 in	1,405 mm
F	Tracks Width	30.71 in	780 mm
G	Width with Stabilizers Down	151.81 in	3,840 mm
H	Length with Stabilizers Down	139.76 in	3,550 mm
Working Height		67 ft	20.5 m
Horizontal Outreach		32 ft	10 m
Turret Rotation		360° non-continuous	360° non-continuous
Jib Length - Range of Articulation		55 in 105°	1,400 mm 105°
Winch Capacity		550 lbs	250 kg
Weight		6,394 lbs	2,900 kg
Drive Speed		1.25 mph	2 km/h
Gradeability		31%	31%
Power (Honda Gas Engine) - Electric Auxiliary Engine		15 HP 230 V 2.2 kW	15 HP 230 V 2.2 kW



PRODUCT FEATURES:

- Articulated boom (two elements), telescopic boom (main boom + 2 extension) and jib
- Four hydraulic outriggers with ground pressure sensors for leveling
- Proportional, electro-hydraulic controls with radio remote control
- Electro-hydraulic steering from the ground with radio control
- Automatic, hydraulically-actioned support winch leveling
- Engine start and stop controls from radio remote control
- 360° non-continuous turret rotation on bearing turntable
- Sigma boom movement enabled by connecting rods
- Four stabilization areas with hydraulic placement
- 230V 2.2 kW electric auxiliary motor
- 230 V AC EC electrical socket
- 550-lb capacity lifting winch
- Basket load-sensing device
- Narrow jacking facility
- Extending width tracks
- 15 HP Honda engine
- Radio remote control
- Dual drive speed
- Hour meter
- Available in blue or white paint

SAFETY FEATURES

- Emergency push button
- Emergency manual pump
- Outriggers/boom interlocking facility
- Cylinders with safety non-return valves
- Intermittent buzzer for travel and turntable rotation
- Active track braking system automatically applied in stationary mode

distributed by: