



presents the
TRACCESS TR-69/39™
and TRE-69/39™

TAKE PRODUCTIVITY TO NEW HEIGHTS

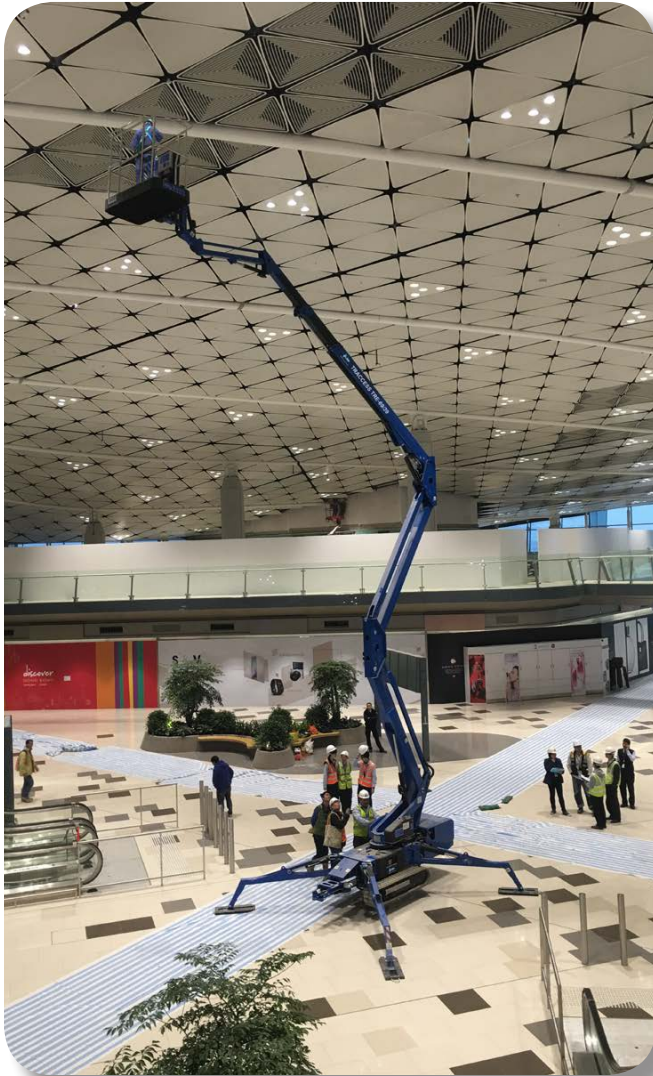
Whether you need to paint a multi-story building façade, replace lighting in a gymnasium ceiling or reach up and over tall shrubbery or trees to perform exterior maintenance, turn to the Absolute E-Z Up® TRACCESS TR-69/39™ or electric TRE-69/39™ track-mounted boom. With over 75 ft of working height, 39 ft working outreach and 6 ft 8 in articulating jib with +110° working angle, the TRACCESS TR-69/39 gives you the access you need to complete a variety of worksite tasks, whether indoors or out.

With its compact footprint, True Zero™ tail swing and 360° non-continuous turret rotation, the TRACCESS TR-69/39 is the ideal lift to maneuver in tight workspaces and will pass through standard doorways with ease.

ULTIMATE STABILITY ON THE JOB

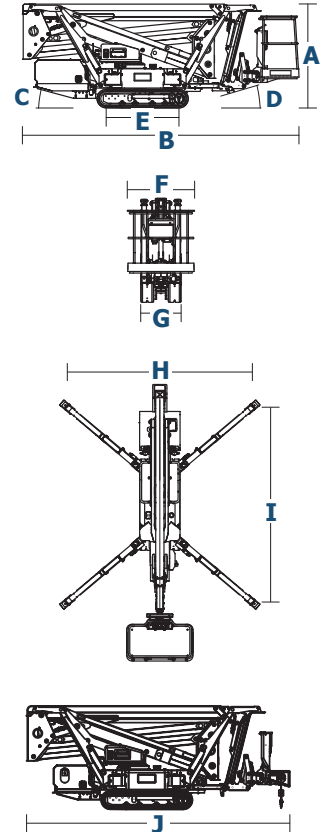
The TRACCESS TR-69/39 features extending width tracks, which automatically adjust to ensure the machine remains stable when working, no matter the height. Combined with non-marking tracks, light 4,620-lb unit weight, and 31% gradeability, the TRACCESS TR-69/39 is a highly-versatile machine that allows you to perform more tasks on the jobsite, saving you both time and money.

And when you're ready to head to the next work site, use the remote coil cable control system to load the TRACCESS TR-69/39 onto a trailer or hook it up to a hitch for quick and easy transport.



TECHNICAL DATA

Model and Measurements	TR-69/39™		TRE-69/39™	
	US	Metric	US	Metric
A Height Stowed	79.13 in	2,010 mm	79.13 in	2,010 mm
B Length Stowed	210.16 in	5,338 mm	210.16 in	5,338 mm
C Entry Angle	16°	16°	16°	16°
D Exit Angle	16°	16°	16°	16°
E Track Length	55.28 in	1,404 mm	55.28 in	1,404 mm
F Width Stowed	51.18 in	1,300 mm	51.18 in	1,300 mm
G Tracks Width	30.71 in	780 mm	30.71 in	780 mm
H Width with Stabilizers Down	139.76 in	3,550 mm	139.76 in	3,550 mm
I Length with Stabilizers Down	151.18 in	3,840 mm	151.18 in	3,840 mm
J Length (without platform for lifting)	200.20 in	5,085 mm	200.20 in	5,085 mm
Platform Height	68 ft 11 in	21 m	68 ft 11 in	21 m
Working Height	75 ft 5 in	23 m	75 ft 5 in	23 m
Horizontal Outreach	39 ft 4 in	12 m	39 ft 4 in	12 m
Turret Rotation	360°	360°	360°	360°
Platform Capacity (Unrestricted)	440 lbs	200 kg	440 lbs	200 kg
Jib Length - Range of Articulation	6 ft 8 in +110°	2,032 mm +110°	6 ft 8 in +110°	2,032 mm +110°
Basket Dimensions (1 or 2 person)	51x27x43 in	1,300x700x1,100 mm	51x27x43 in	1,300x700x1,100 mm
Weight	6,394 lbs	2,900 kg	6,300 lbs	2858 kg
Drive Speed (Gas and Electric)	1.24 mph	2 km/hr	.37 mph	.6 km/hr
Gradeability	31%	31%	31%	31%
Power (Single Cylinder Gas Engine) - Auxiliary Engine	15 HP 230 V 1.5 kW	15 HP 230 V 1.5 kW		
Power (Electric Engine) - Batteries			48V 300 Ah lithium	48V 300 Ah lithium

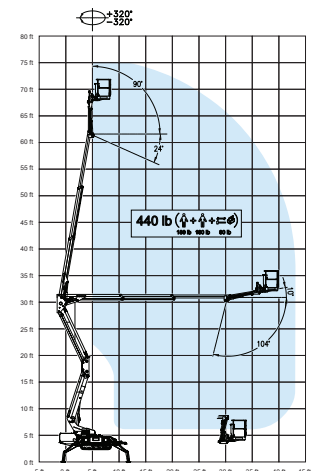


PRODUCT FEATURES:

- Two-element steel boom, telescopic boom (main boom + 2 extensions) and jib
- Sigma boom movements enabled by connecting rods
- Strong, durable composite material for basket floor; aluminum guardrail
- 360° tower rotation on center bearing turntable
- Proportional electro-hydraulic controls in basket
- 440-lb work capacity throughout entire working area
- Engine start and stop controls from basket
- Electro-hydraulic steering from the ground with radio control
- Four hydraulic outriggers with ground-pressure sensors for leveling
- 90° right, 90° left hydraulic basket rotation
- 4 stabilization areas with hydraulic placement

SAFETY FEATURES

- 230V AC EC electrical socket in the basket
- 230V 2.2 kW electric auxiliary motor
- 15 HP Honda gas engine
- Hydraulic basket leveling
- Narrow jacking facility
- Easily detachable basket
- Extending width tracks
- Dual drive speed
- Radio remote control
- Hour meter
- Self-loading and towable
- CE certified
- Available in blue or white paint
- Basket load-sensing device
- Two safety harness hookup locations on platform
- Emergency push button
- Emergency manual pump
- Outriggers/boom interlocking facility
- Cylinders with safety non-return valves
- Intermittent buzzer for travel and turntable rotation
- Active track braking system automatically applied in stationary mode



distributed by: